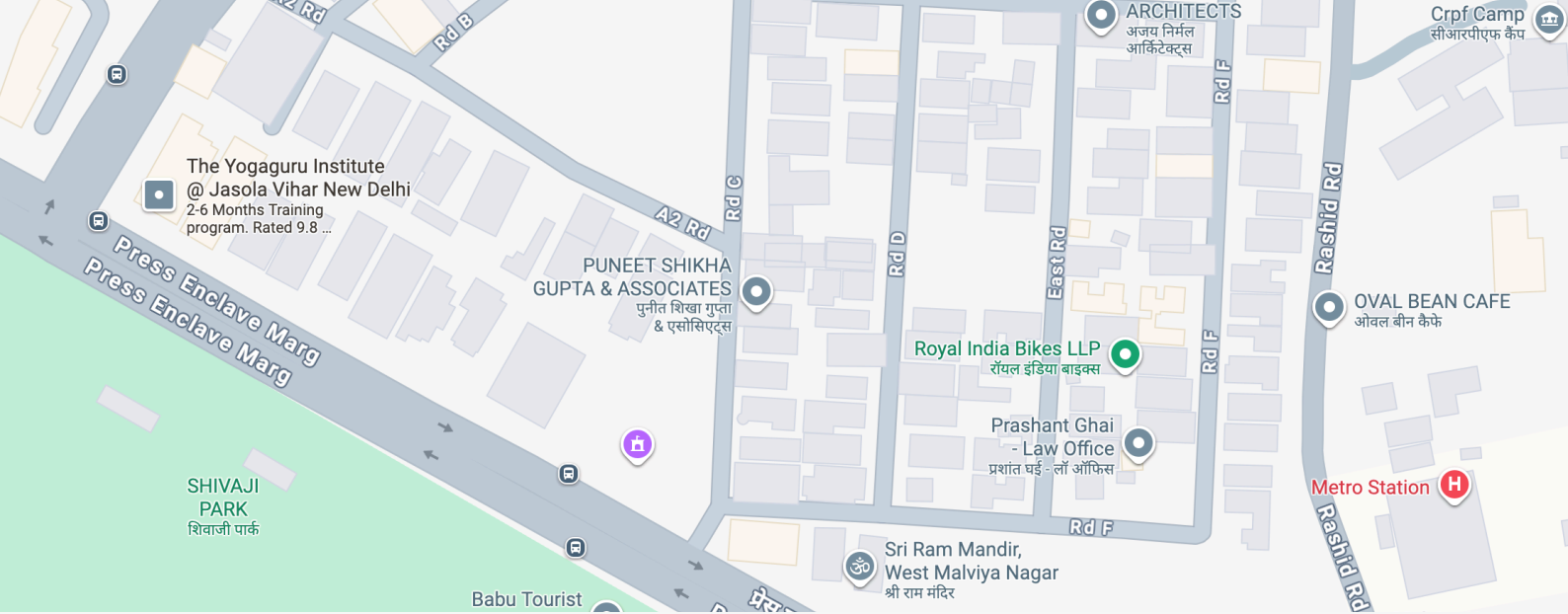




BMB DEVELOPERS PRIVATE LTD

---

E-12  
GEETANJALI  
ENCLAVE



## About

Geetanjali Enclave is an upscale residential colony in South Delhi, known for its peaceful environment, tree-lined streets, and well-maintained infrastructure.



The colony offers a mix of

spacious independent houses and plots, making it ideal for families seeking comfort and privacy. Located close to Saket and Malviya Nagar, it enjoys excellent connectivity through metro stations, major roads, and nearby commercial hubs. Residents benefit from strong security, green surroundings, and proximity to schools, hospitals, and shopping centres. With its calm ambiance, community living, and prime location, Geetanjali Enclave has emerged as one of the most sought-after residential neighbourhoods in New Delhi..

# Details

PLOT SIZE	337.8 SQ YARDS
TOTAL NUMBER OF FLOORS IN THE BUILDING	6
<b>FLOOR AVAILABLE FOR SALE</b>	<b>FIRST FLOOR &amp; SECOND FLOOR</b>
FLOOR AREA	2,025 SQ FT
<hr/>	
BEDROOMS	4
CAR PARKING	2 PER FLOOR
WASHROOMS	4
LIFT	6 PASSENGER LIFT
LOUNGE	1
LIFT LOBBY	YES
<hr/>	
STRUCTURE	EARTHQUAKE RESISTANT CONFORMING TO ZONE IV SPECIFICATIONS
WATERPROOFING	GUARANTEED WATERPROOFING FROM DR FIXIT
ELECTRICAL	SEPARATE 11 KW LOAD
WOOD WORK	MODULAR KITCHEN/ WARDROBES
<hr/>	
WATER	SEPARATE WATER CONNECTION
AIR CONDITIONING	DAIKIN
AFTER SALES SERVICE	1 YEAR FOR ALL
NATURAL LIGHT	YES

PEACE OF MIND

100%

# Ratings



## Connectivity



Geetanjali Enclave enjoys excellent connectivity with easy access to Malviya Nagar and Saket metro stations, Outer Ring Road, and major arterial routes. It is around 13-15 kilometers from Indira Gandhi International Airport, ensuring convenient travel.

## Neighbour Hood



The neighbourhood of Geetanjali Enclave is vibrant yet peaceful, surrounded by prime South Delhi localities like Saket, Malviya Nagar, and Panchsheel Park. It offers proximity to malls, schools, hospitals, and cultural hubs, while retaining a calm, green environment. The mix of modern conveniences and serene surroundings makes it highly desirable.



## Safety



Geetanjali Enclave is considered one of the safer residential colonies in South Delhi, with gated entry points, 24/7 security, and regular patrolling. The well-organised Residents Welfare Association ensures safety measures are maintained, fostering a secure and comfortable environment for families, senior citizens, and children within the community.

## Livability



Geetanjali Enclave offers excellent livability with its blend of greenery, wide roads, and peaceful surroundings. The colony provides spacious homes, reliable security, and easy access to schools, hospitals, and shopping complexes. Its strategic location, modern amenities, and strong community atmosphere make it a highly comfortable and desirable place to live.



# Location



[CLICK HERE](#)

# Market Analysis Summary

The residential market of Geetanjali Enclave in New Delhi falls within the premium luxury segment, primarily comprising of spacious independent houses and select builder floors. It is regarded as a secure, serene, and prestigious address, offering a green well-planned residential environment with proximity to Saket, Malviya Nagar and shopping destinations like Select City Walk.

## **Demand Drivers**

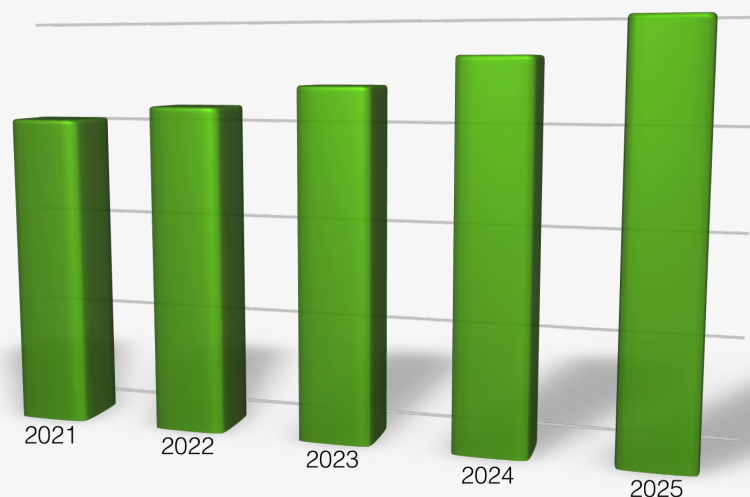
Geetanjali Enclave's residential appeal is supported by multiple factors. Connectivity is strong with easy access to the Outer Ring Road, Malviya Nagar and Saket metro stations, and just 13-15 Kms from Indira

Gandhi International Airport. The colony is gated, with wide roads, ample greenery, and excellent proximity to reputed schools, health-care, and cultural hubs. With consistent demand from high-net-worth individuals, NRIs and families seeking exclusivity, it retains strong investment potential.

## **Market**

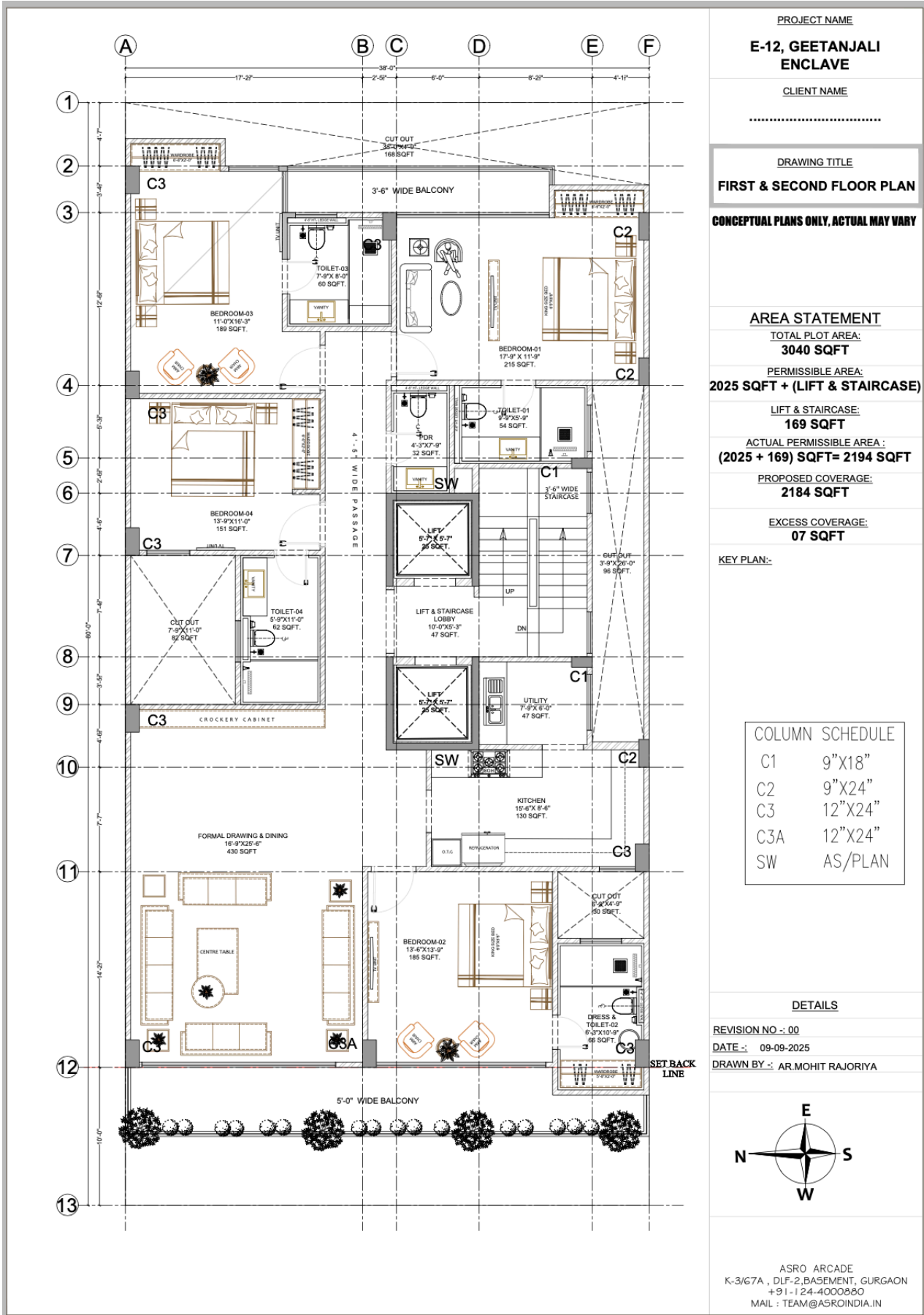
Geetanjali Enclave remains a compelling residential and investment destination. With solid connectivity, limited supply, and consistent appreciation ranging from ~11% annually to ~15% over five years, it offers both stability and potential for strong capital gains. This makes it highly attractive to both end-users and investors.

## **Outlook - Positive**

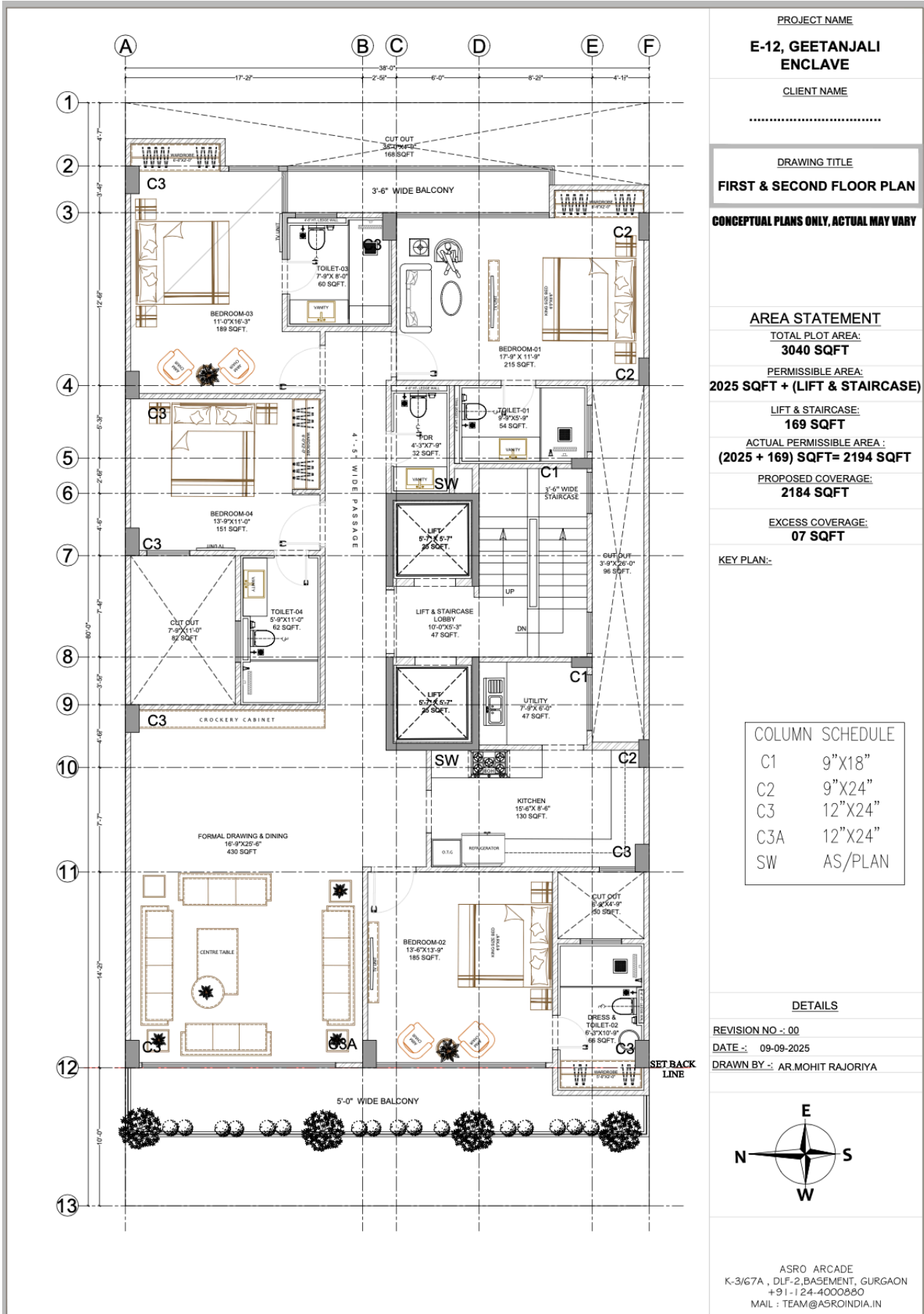


Real Estate Purchase Price 2021 -2025

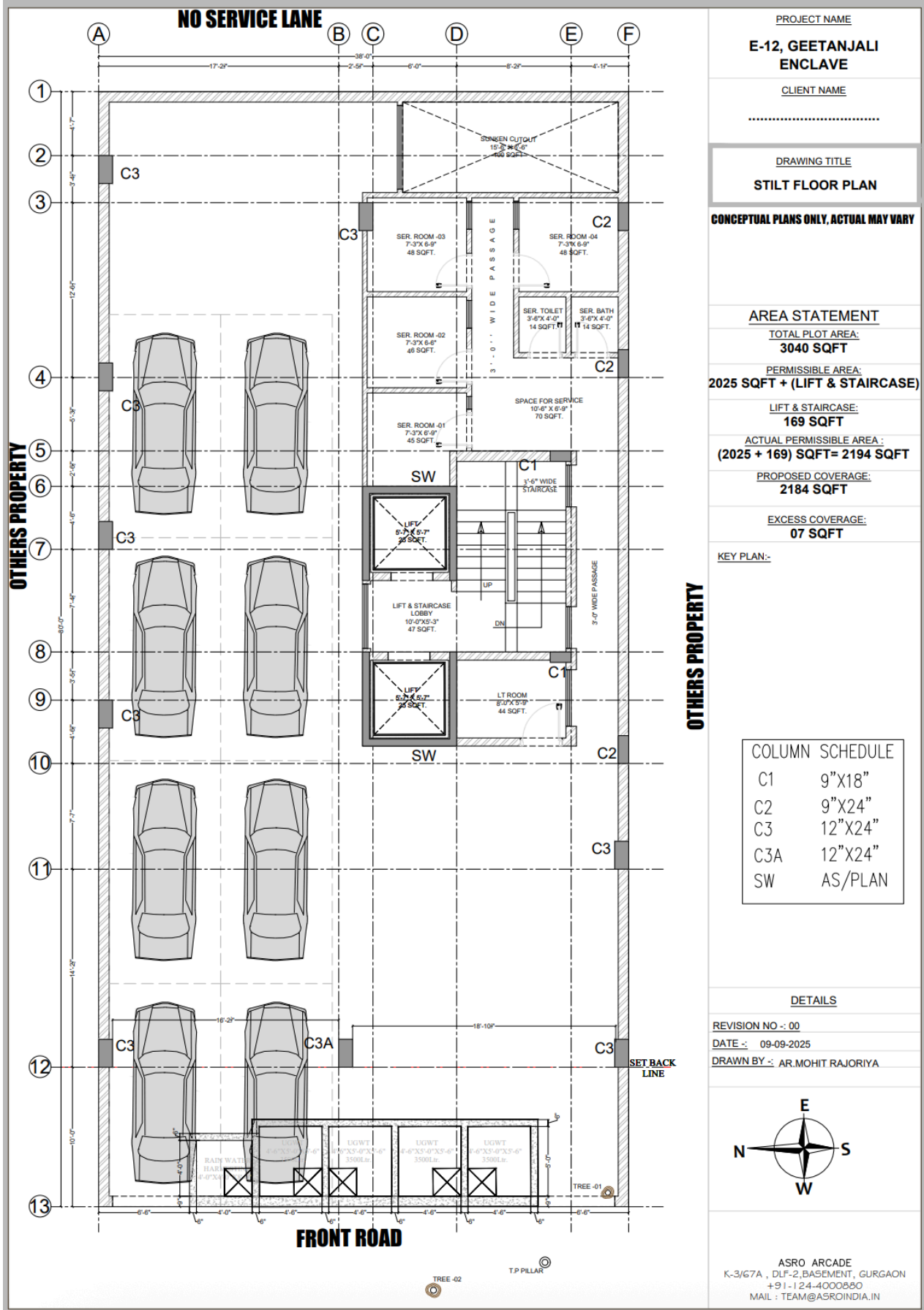
# Floor Plan - First Floor



# Floor Plan - Second Floor



# Parking Plan





 : [+91 9910923776](tel:+919910923776)

 : [contact@bmbdevelopers.com](mailto:contact@bmbdevelopers.com)

 : [Whatsapp \(Click here\)](#)

 : [bmbdevelopers.com](http://bmbdevelopers.com)

 : [Instagram](#)

 : [facebook](#)